



# SWIMMING POOL HEAT PUMP UNIT

## Installation & Instruction Manual

### OASIS INVERTER HEAT PUMPS

Ci 10, Ci 13, Ci 17, Ci 21, Ci 25



---

#### Head Office

62 Parkhurst Drive  
Knoxfield VIC 3180  
T: 03 9887 2131

#### New South Wales

Unit 1, 20-22 Foundry Road  
Seven Hills NSW 2147  
T: 02 9838 0000

#### Queensland

Unit 4, 8 Reichert Street  
Molendinar QLD 4214  
T: 07 5679 6821

[sales@sunloverheating.com.au](mailto:sales@sunloverheating.com.au)  
[sunloverheating.com.au](http://sunloverheating.com.au)

# CONTENTS

<b>1. PREFACE</b>	<b>3</b>
<b>2. SPECIFICATION</b>	<b>4</b>
2.1 Performance data of Swimming Pool Heat Pump Unit	4
2.1 Performance data of Swimming Pool Heat Pump Unit	5
2.2 The dimensions for Swimming Pool Heat Pump Unit	6
2.2 The dimensions for Swimming Pool Heat Pump Unit	7
<b>3. INSTALLATION AND CONNECTION</b>	<b>8</b>
3.1 Installation illustration	8
3.2 Swimming Pool Heat Pumps Location	9
3.3 How Close to Your Pool?	9
3.4 Swimming Pool Heat Pumps Plumbing	10
3.5 Swimming Pool Heat Pumps Electrical Wiring	11
3.6 Initial start-up of the Unit	11
<b>4. USAGE AND OPERATION</b>	<b>12</b>
4.1 Main interface	12
4.1.A - Button Description	12
4.2 Colour screen wire controller function introduction	13
4.2.A - Booting and shutdown	13
4.2.B - Mode switch and target temperature Setting	13
4.3.B - Clock setting	14
4.4 - Silent setting and silent timing setting	16
4.4.A - The operation of time setting	16
4.4.B - The silent button	16
4.4.C - Timing silent function setting	17
4.5 - History of the fault	18
4.6 - Temperature Curve	19
4.6.A - Temperature recording curve is as follows:	19
4.6.B - The average power curve	19
4.7 - Parameter list and breakdown table	20
4.7.A - Electronic control fault table	20
Frequency conversion board fault table:	21
4.7.B - Parameter list	22
4.8 Interface drawing	22
4.8.A Wire control interface diagram and definition	22
4.8.B Controller interface diagram and definition	22
<b>5. MAINTENANCE AND INSPECTION</b>	<b>24</b>
5.1 Maintenance	24
<b>6. APPENDIX</b>	<b>25</b>
6.1 Caution & Warning	25
6.2 Cable specification	26
6.3 Explosive view of the unit	27
Oasis Ci 10	27
Oasis Ci 13	29
Oasis Ci 17	31
Oasis Ci 21	33
Oasis Ci 25 T	35

# 1. PREFACE

To provide our customers with quality, reliability and versatility, this product has been made to strict production standards. This manual includes all the necessary information about installation, debugging, discharging and maintenance. Please read this manual carefully before you open or maintain the unit. The manufacture of this product will not be held responsible if someone is injured or the unit is damaged, as a result of improper installation, debugging, or unnecessary maintenance. It is vital that the instructions within this manual are adhered to at all times. The unit must be installed by qualified personnel.

The unit can only be repaired by qualified installer centre, personnel or an authorised dealer. Maintenance and operation must be carried out according to the recommended time and frequency, as stated in this manual.

Use genuine standard spare parts only.

Failure to comply with these recommendations will invalidate the warranty.

Swimming Pool Heat Pump Unit heats the swimming pool water and keeps the temperature constant. For split type unit, the indoor unit can be discretely hidden or semi-hidden to suit a luxury house.

Our heat pump has following characteristics:

## **1 Durable**

The heat exchanger is made of PVC & Copper Nickle tube which can withstand prolonged exposure to swimming pool water.

## **2 Installation flexibility**

The unit can be installed outdoors or indoors.

## **3 Quiet operation**

The unit comprises an efficient rotary/ scroll compressor and a low-noise fan motor, which guarantees its quiet operation.

## **4 Advanced controlling**

The unit includes micro-computer controlling, allowing all operation parameters to be set. Operation status can be displayed on the LCD wire controller. Remote controller can be chosen as future option.

## 2. SPECIFICATION

### 2.1 Performance data of Swimming Pool Heat Pump Unit

\*\*\* REFRIGERANT: R410A

		Ci 7	Ci 10	Ci 13
Performance Condition: Air 27°C / Water 26°C				
Heating Capacity	kW	2.2 ~ 9	2.9 ~ 12	3.8 ~ 17
Running Current	A	0.8 ~ 7	1.1 ~ 9.4	1.5 ~ 13.3
Performance Condition: Air 19°C / Water 26°C				
Heating Capacity	kW	2.0 ~ 8.6	2.47 ~ 10.6	3.2 ~ 13.6
Running Current	A	1.2 ~ 7.0	1.5 ~ 9.2	2.2 ~ 12.8
Heating Power Input	kW	0.16 – 1.3	0.21–2.12	0.37–3.94 0
Cooling Capacity	kW	3.7	4.5	5.1
Cooling Power Input	kW	1.5	1.9	2.0
Running Current	A	1.1 ~ 7.2	1.5 ~ 9.2	2.2 ~12.8
Power Supply	V/Ph/Hz	10 AMP Plug	10 AMP Plug	240/1/50
Compressor Quantity	1	1	1	1
Compressor		Rotary	Rotary	Rotary
Fan Quantity		1	1	1
Fan Power Input	W	100	100	100
Fan Rotate Speed	RPM	400 – 800	400 – 800	500 – 750
Fan Direction		Horizontal	Horizontal	Horizontal
Noise 1m	dB(A)	40 – 50	42 – 52	44 – 53
Silence Mode 1m	dB(A)	40	42	44
Water Connection	Mm	40	40	50
Water Flow Volume	l/m	53	70	88
Water Pressure Drop (max)	kPa	4	4.5	5
Unit Shipping Dimensions	Mm (L/W/H)	1130 × 470 × 790	1130 × 470 × 790	1120 x 490 x 880
Net Weight / Shipping Weight	kg	60 / 70	60 / 70	59 / 69

*Cooling capacity is based on 19 °C ambient air temperature and 26°C water temperature*

## 2. SPECIFICATION

### 2.1 Performance data of Swimming Pool Heat Pump Unit

\*\*\* REFRIGERANT: R410A

		Ci 17	Ci 21	Ci 25
Performance Condition: Air 27°C / Water 26°C				
Heating Capacity	kW	4.6 ~ 19.5	5.7 ~ 24.2	6.7 ~ 28.3
Running Current	A	1.8 ~ 17.2	2.2 ~ 20.9	1.1 ~ 9.3
Performance Condition: Air 19°C / Water 26°C				
Heating Capacity	kW	4.2 ~ 16.9	5.1 ~ 21.9	5.3 ~ 25.4
Running Current	A	2.6 ~ 16.8	3.3 ~ 18	1.8 ~ 9.3
Heating Power Input	kW	0.3~3.02	0.46~4.8	0.54~5.57
Cooling Capacity	kW	6.1	9.0	12.0
Cooling Power Input	kW	2.2	4.5	5.2
Running Current	A	2.6 ~ 16.8	3.3 ~ 18	1.8 ~ 9.3
Power Supply	V/Ph/Hz	240/1/50	240/1/50	400V/3/50
Compressor Quantity	1	1	1	1
Compressor		Rotary	Rotary	Rotary
Fan Quantity		1	2	2
Fan Power Input	W	120	120	200
Fan Rotate Speed	RPM	500 – 900	400 - 850	400 - 850
Fan Direction		Horizontal	Horizontal	Horizontal
Noise 1m	dB(A)	45 – 56	48 – 58	48 – 58
Silence Mode 1m	dB(A)	45	48	48
Water Connection	Mm	50	50	50
Water Flow Volume	l/m	110	166	166
Water Pressure Drop (max)	kPa	6	15	15
Unit Shipping Dimensions	Mm (L/W/H)	1120 x 490 x 880	1120 x 490 x 880	1120 x 490 x 1230
Net Weight / Shipping Weight	kg	77 / 95	82 / 95	110 / 125

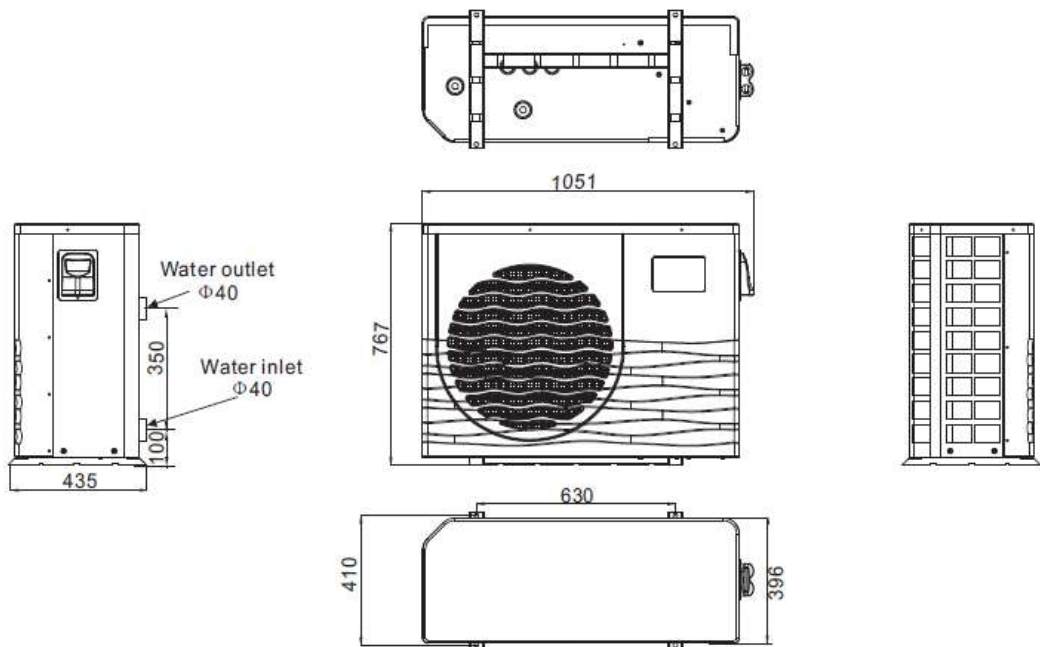
*Cooling capacity is based on 19 °C ambient air temperature and 26°C water temperature*

# 2. SPECIFICATION

## 2.2 The dimensions for Swimming Pool Heat Pump Unit

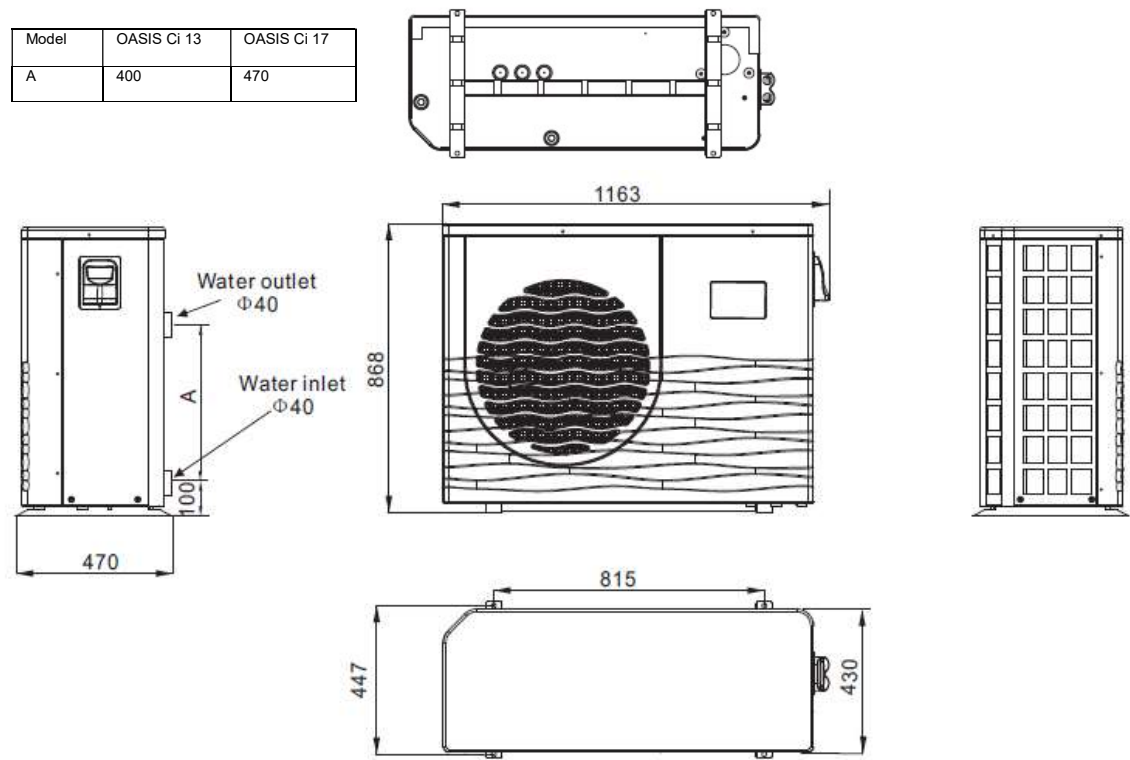
Oasis Ci 10

unit : mm



Oasis Ci 13 / Oasis Ci 17

unit : mm

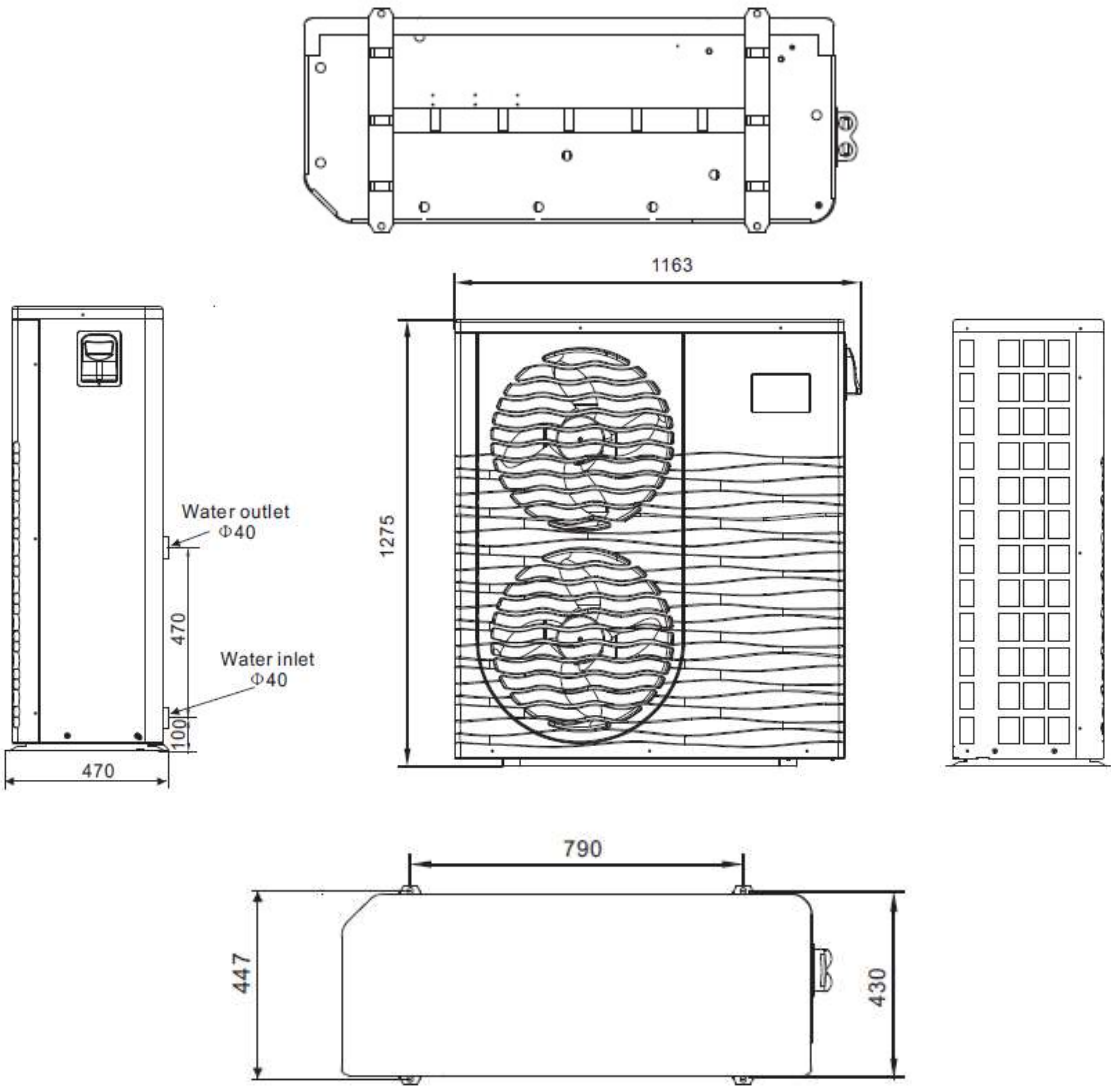


# 2. SPECIFICATION

## 2.2 The dimensions for Swimming Pool Heat Pump Unit

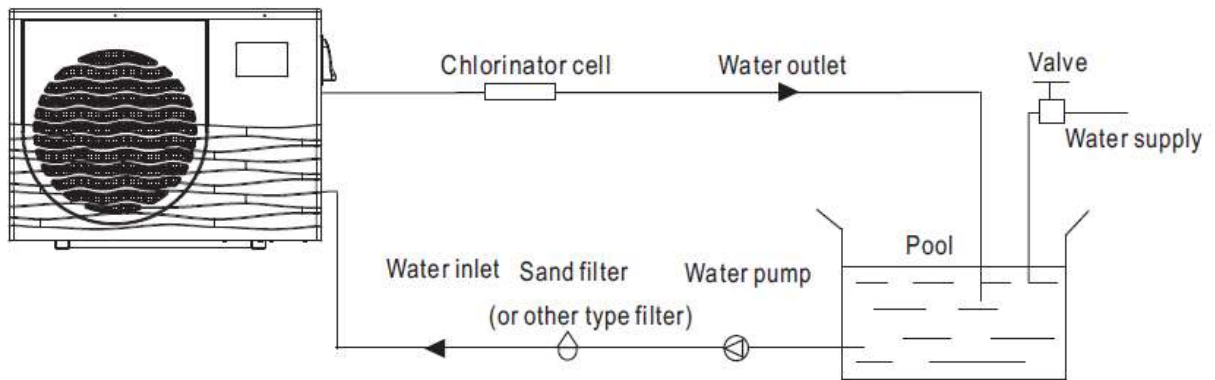
Oasis Ci 21 / Oasis Ci 25 T

unit : mm



### 3. INSTALLATION AND CONNECTION

#### 3.1 Installation illustration



#### Installation items:

The factory only provides the main unit and the water unit; the other items in the illustration are necessary spare parts for the water system, that is provided by users or the installer.

#### Attention:

Please follow these steps when using for the first time

1. Open valve and charge water.
2. Make sure that the pump and the water-in pipe have been filled with water.
3. Close the valve and start the unit.

ATTN: It is necessary that the water-in pipe is higher than the pool surface.

The schematic diagram is for reference only. Please check the water inlet/outlet label on the heat pump while plumbing installation.



## 3. INSTALLATION AND CONNECTION

### 3.2 Swimming Pool Heat Pumps Location

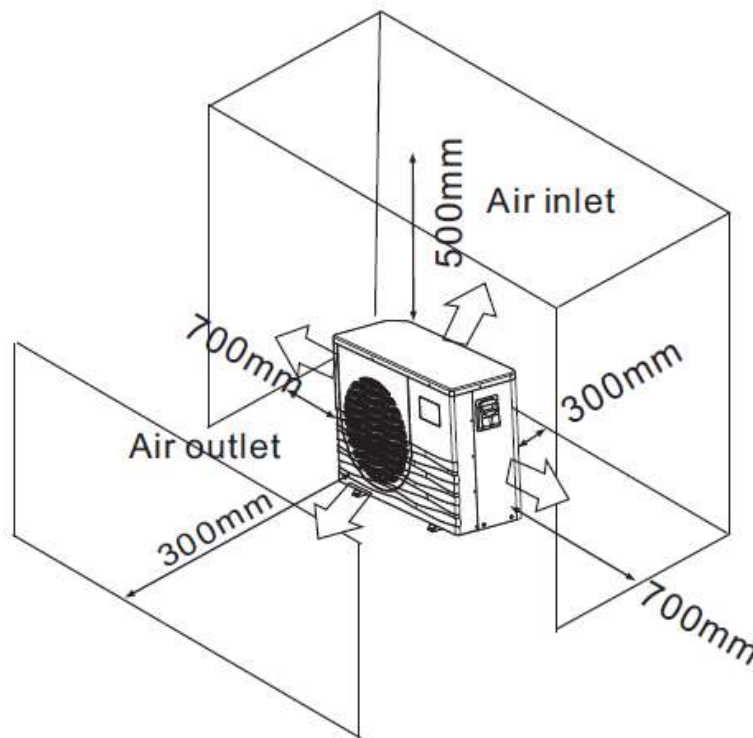
The unit will perform well in any outdoor location provided that the following three factors are presented:

1. Fresh Air - 2. Electricity - 3. Pool filter piping

The unit may be installed virtually anywhere outdoors. For indoor pools please consult the supplier. Unlike a gas heater, it has no draft or pilot light problem in a windy area.

DO NOT place the unit in an enclosed area with a limited air volume, where the units discharge air will be re-circulated.

DO NOT place the unit to shrubs which can block air inlet. These locations deny the unit of a continuous source of fresh air which reduces its efficiency and may prevent adequate heat delivery.



### 3.3 How Close to Your Pool?

Normally, the pool heat pump is installed within 7.5 metres of the pool. The longer the distance from the pool, the greater the heat loss from the piping. For the most part, the piping is buried. Therefore, the heat loss is minimal for runs of up to 15 meters (15 meters to and from the pump = 30 meters total), unless the ground is wet, or the water table is high. A very rough estimate of heat loss per 30 meters is 0.6 kW-hour, (2000BTU) for every 5 °C difference in temperature between the pool water and the ground surrounding the pipe, which translates to about 3% to 5% increase in run time.

## 3. INSTALLATION AND CONNECTION

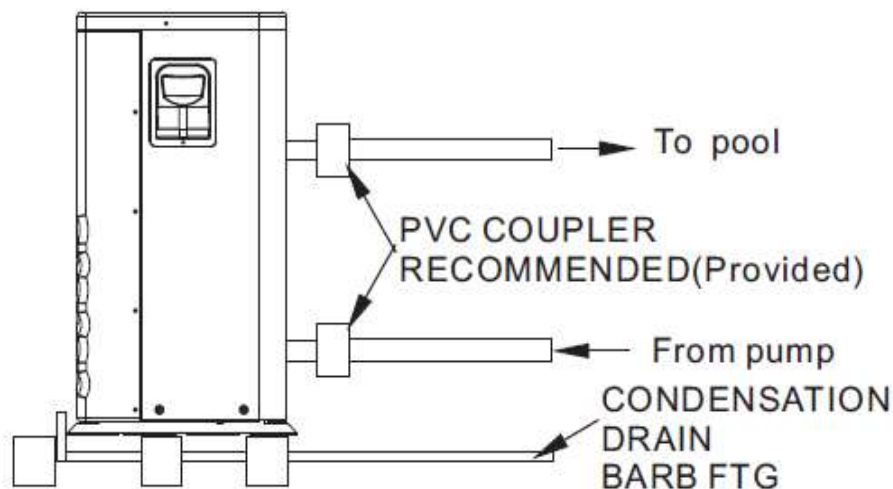
### 3.4 Swimming Pool Heat Pumps Plumbing

The Swimming Pool Heat Pumps exclusive rated flow titanium heat exchanger requires no special plumbing arrangements except bypass (please set the flow rate according to the nameplate). The water pressure drop is less than 10kPa at max. Flow rate. Since there is no residual heat or flame Temperatures, the unit does not need copper heat sink piping. PVC pipe can be run straight into the unit.

Location: Connect the unit in the pool pump discharge (return) line downstream of all filter and pool pumps, and upstream of any chlorinators, ozonators or chemical pumps.

Standard model have slip glue fittings which accept 32mm or 50 mm PVC pipe for connection to the pool or spa filtration piping. By using a 50 NB to 40NB you can plumb 40NB.

Give serious consideration to adding a quick coupler fitting at the unit inlet and outlet to allow easy draining of unit for winterizing and to provide easier access should servicing be required.



Condensation: Since the Heat pump cools down the air about 4 -5°C, water may condense on the fins of the horseshoe shaped evaporator. If the relative humidity is very high, this could be as much as several litres an hour. The water will run down the fins into the basepan and drain out through the barbed plastic condensation drain fitting on the side of the basepan.

This fitting is designed to accept 20mm clear vinyl tubing which can be pushed on by hand and run to a suitable drain. It is easy to mistake the condensation for a water leak inside the unit.

NB: A quick way to verify that the water is condensation is to shut off the unit and keep the pool pump running. If the water stops running out of the basepan, it is condensation. AN EVEN QUICKER WAY IS to TEST THE DRAIN WATER FOR CHLORINE - if there is no chlorine present, then it's condensation

## 3. INSTALLATION AND CONNECTION

### 3.5 Swimming Pool Heat Pumps Electrical Wiring

NOTE: Although the unit heat exchanger is electrically isolated from the rest of the unit, it simply prevents the flow of electricity to or from the pool water. Grounding the unit is still required to protect you against short circuits inside the unit. Bonding is also required.

The unit has a separate molded-in junction box with a standard electrical conduit nipple already in place. Just remove the screws and the front panel, feed your supply lines in through the conduit nipple and wire-nut the electric supply wires to the three connections

already in the junction box (four connections if three phase). To complete electrical hook-up, connect Heat Pump by electrical conduit, UF cable or other suitable means as specified (as permitted by local electrical authorities) to a dedicated AC power supply branch circuit

equipped with the proper circuit breaker, disconnect or time delay fuse protection.

Disconnect - A disconnect means (circuit breaker, fused or un-fused switch) should be located within sight of and readily accessible from the unit, this is common practice on commercial and residential air conditioners and heat pumps. It prevents remotely-energizing unattended equipment and permits turning off power at the unit while the unit is being serviced.

### 3.6 Initial start-up of the Unit

NOTE- In order for the unit to heat the pool or spa, the filter pump must be running to circulate water through the heat exchanger.

Start-up Procedure - After installation is completed, you should follow these steps:

1. Turn on your filter pump. Check for water leaks and verify flow to and from the pool.
2. Turn on the electrical power supply to the unit, then press the key ON/OFF of wire controller, it should start in several seconds.
3. After running a few minutes make sure the air leaving the top(side) of the unit is cooler (Between 5-10 °C)
4. With the unit operating turn the filter pump off. The unit should also turn off automatically,
5. Allow the unit and pool pump to run 24 hours per day until desired pool water temperature is reached. When the water-in temperature reach setting, the unit just shuts off. The unit will now automatically restart (if your pool pump is running) when the pool temperature drops more than 2°C below set temperature.

Time Delay- The unit is equipped with a 3-minute built-in solid state restart delay included to protect control circuit components and to eliminate restart cycling and contactor chatter.

This time delay will automatically restart the unit approximately 3 minutes after each control circuit interruption. Even a brief power interruption will activate the solid state 3-minute restart delay and prevent the unit from starting until the 3-minute countdown is completed.

Power interruptions during the delay period will have no effect on the 3-minute countdown.

## 4. USAGE AND OPERATION

### 4.1 Main interface



#### 4.1.A - Button Description

NO.	Name	Button Function
①	ON/OFF	Press to start /shut off the unit
②	Parameter	Click this button to view the unit state and the parameter
③	Clock	Press to set the clock, the timer on or timer off. When the timer was starting, the button is green
④	Fault Display	Click to view fault history
⑤	Silent Setting	Click to turn on/off silent function and to set timing Low speed function.
⑥	Mode	Click to enter mode setting and the target temp. Setting interface
⑦	Temp. Curve	Click to view the temp. and power curve
⑧	Water Inlet T emp	Click to enter mode setting and the target temp. Setting interface
⑨	Lock	Click to lock the screen , Input "22" to unlock the screen by press the "lock button"

## 4. USAGE AND OPERATION

### 4.2 Colour screen wire controller function introduction

#### 4.2.A - Booting and shutdown

As shown in figure 1.1:

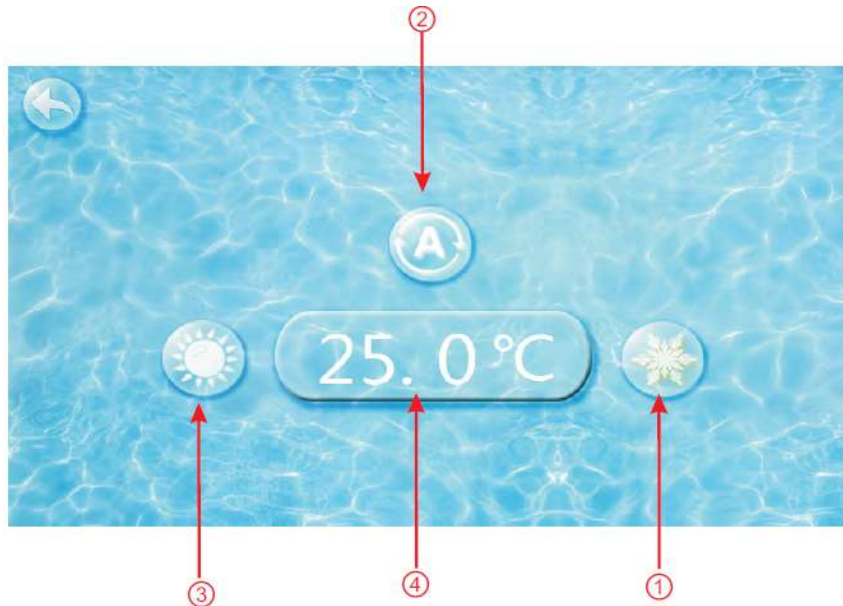
In shutdown status, click ① then the unit will be booted

In booting status, click ① then the unit will be shut down.

#### 4.2.B - Mode switch and target temperature Setting

##### 4.2 1 Mode switch

In the main interface, click mode button or inlet water temperature setting button, interface displays as follows:



Click the refrigeration mode button ① , automatic mode button ② or heating mode button ③ then you can select the corresponding mode.

Note: when the unit is designed for single automatic mode or single thermal mode, the mode cannot be switched.

##### 4.2 2 Target temp. setting

Click the temperature set button ④ , you can set the target temperature

## 4. USAGE AND OPERATION

### 4.3.B - Clock setting

In the main interface, click on the clock Settings button, interface displays as follows:



4.3 A- The operation of time setting

Click on the time Settings button ①, interface displays as follows



Click the value to set time directly, the click confirm button to save the Settings.

For example: setup time: the 30-11-2016 16:00:00, input 30 11 16 16 00 00 , the time change then click confirm button.

Note: if the input format is not correct, the wrong time will be saved by clicking confirm button.

# 4. USAGE AND OPERATION

## 4.3 B The operation of time setting

Click the timing set button ② to enter timing set interface.



NO.	Name	Button colour	Button Function
①	Timing start button	Start: green End: gray	Click this button to start or end timing start setting function
②	Timing on setting		Click to set start time of the timing
③	Timing end button	Open: red End: gray	Click this button to start or end timing end setting function
④	Timing off setting		Click to set end time of the timing



When the timer was starting, the clock button is green in the main interface



## 4. USAGE AND OPERATION

### 4.4 - Silent setting and silent timing setting

Click the silent setting button and the interface displays as follows:

#### 4.4.A - The operation of time setting



#### 4.4.B - The silent button

Click the silent button ①, the unit will enter the silent mode, and interface displays as follows:



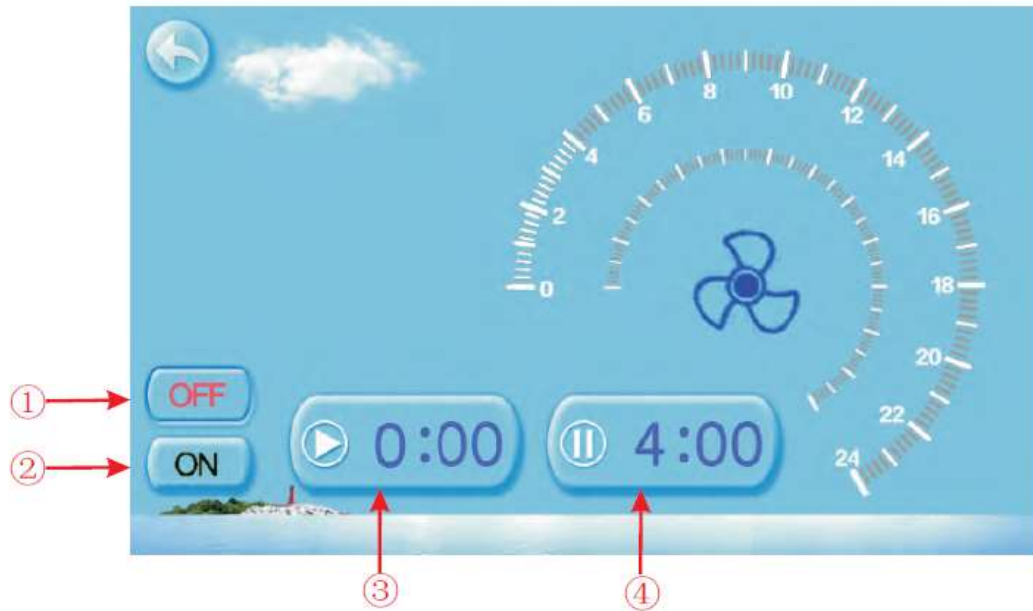
Click the silent button ① again, to exit the silent mode.



## 4. USAGE AND OPERATION

### 4.4 C - Timing silent function setting

Click timing silent button ②, and interface displays as follows:



NO.	Name	Button colour	Button Function
①	Timing silent off	Used: red Unused: grey	Click to use or unuse timing off function
②	Timing silent on	Use: green Unused : grey	Click to use or unuse timing on function
③	Timing silent start time		Click this button to set the timing silent start time
④	Timing silent end time		Click this button to set the timing silent end time

Start time and end time setting value must be among the range of 0:00 -23:00, and setting value can be precise to hour digit.

For example above, click "ON" to use timing silent, the unit will start the silent at 0:00 points and end at 4:00; click "OFF" to unuse the timing silent, but if the unit is in timing silent mode, it will exit silent timing immediately.

# 4. USAGE AND OPERATION

## 4.5 - History of the fault

In the main interface click fault display key, interface displays as follows:



If no failure, main interface displays static " ⚠ "

When fault occurs, the fault icon will flash between the icon " ⚠ " & " ⚠ "

The failure interface will record time, code and name of the fault.

After troubleshooting, if you do not check the failure record, the main interface will display static " ⚠ "

If you check the failure record, the main interface will displays static " ⚠ "

Failure record is in reverse order, according to the happening time.

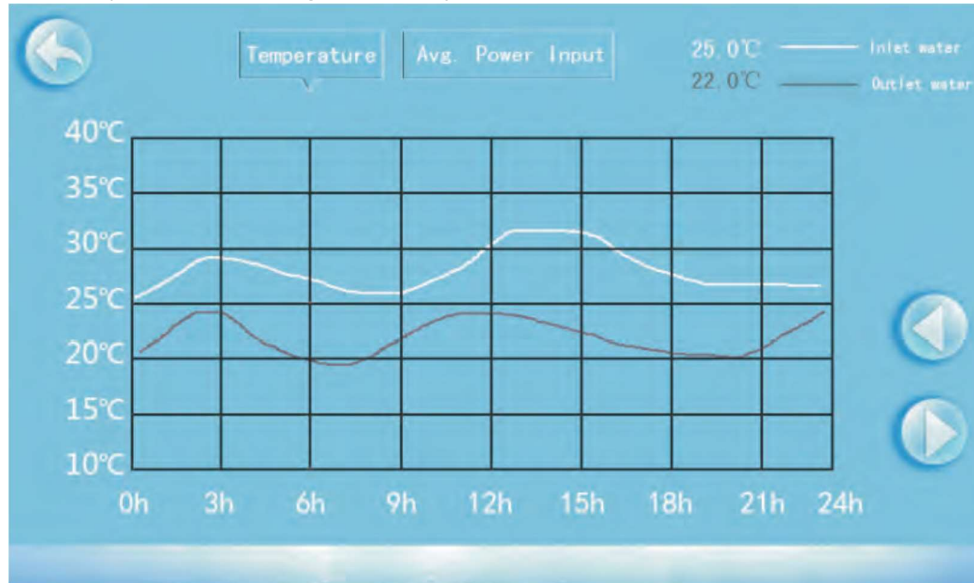
Press the "Clean" key, you can delete the fault record.

## 4. USAGE AND OPERATION

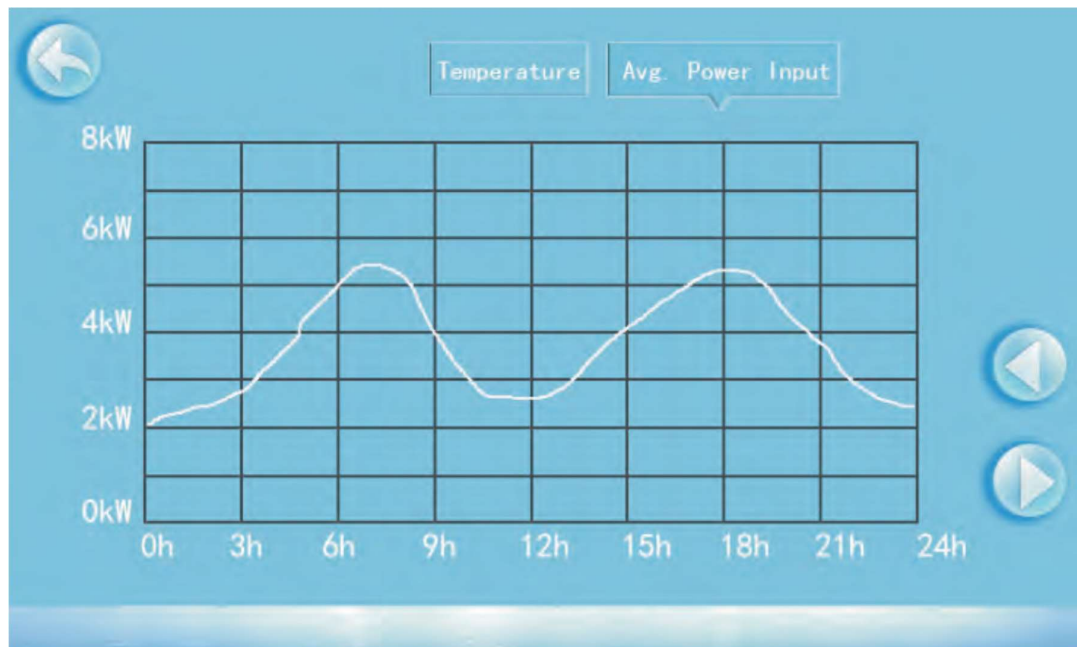
### 4.6 - Temperature Curve

In the main interface, click the curve display button, interface displays as follows:

4.6.A - Temperature recording curve is as follows:



4.6.B - The average power curve



Temperature curve automatically updates every one hour, and the curve record can be stored for 60 days. Start from the latest curve saved time, if power is off and curve data collecting time is less than one hour, the data in this period will not be saved.

## 4.7 - Parameter list and breakdown table

### 4.7.A - Electronic control fault table

Can be judged according to the remote controller failure code and troubleshooting

Protect/fault	Fault display	Reason	Elimination methods
Standby	Non		
Normal boot	Non		
Inlet Temp. Sensor Fault	P01	The temp. Sensor is broken or short circuit	Check or change the temp. Sensor
Outlet Temp. Sensor Fault	P02	The temp. Sensor is broken or short circuit	Check or change the temp. Sensor
Ambient Temp. Sensor Fault	P04	The temp. Sensor is broken or short circuit	Check or change the temp. Sensor
Coil Temp. Sensor Fault	P05	The temp. Sensor is broken or short circuit	Check or change the temp. Sensor
Suction Temp. Sensor Fault	P07	The temp. Sensor is broken or short circuit	Check or change the temp. Sensor
Discharge Temp. Sensor Fault	P08	The temp. Sensor is broken or short circuit	Check or change the temp. Sensor
High Pressure Prot.	E01	The high-pressure switch is broken	Check the pressure switch and cold circuit
Low Pressure Prot.	E02	Low pressure protection	Check the pressure switch and cold circuit
Flow Switch Prot.	E03	No water/little water in water system	Check the pipe water flow and water pump
Anti-freezing Prot	E07	Water flow is not enough	Check the pipe water flow and whether water system is jammed or not
Primary Anti-freezing Prot.	E19	The ambient temp. is low	
Secondary Anti-freezing Prot.	E29	The ambient temp. is low	
Inlet and outlet temp. too big	E06	Water flow is not enough and low differential pressure	Check the pipe water flow and whether water system is jammed or not
Low temperature protection	Non	The environment temp. is low	
Comp. Overcurrent Prot.	E05	The compressor is overload	Check whether the system of the compressor running normally
Exhaust Air over Temp Prot.	P082	The compressor is overload	Check whether the system of the compressor running normally
Communication Fault	E08	Communication failure between wire controller and mainboard	Check the wire connection between remote wire controller and main board
Antifreeze Temp. Sensor Fault	P09	antifreeze temp sensor is broken or short circuited	check and replace this temp sensor
Waterway Anti-freezing Prot.	E05	water temp. or ambient temp. is too low	
EC fan feedback Fault	F05	There is something wrong with fan motor and fan motor stops running	Check whether fan motor is broken or locked or not
Pressure sensor Fault	PP	The pressure Sensor is broken	Check or change the pressure Sensor or pressure
Fan Motor1 Fault	F03	1. Motor is in locked-rotor state 2. The wire connection between DC-fan motor module and fan motor is in bad contact	1. Change a new fan motor 2. Check the wire connection and make sure they are in good contact



## 4. USAGE AND OPERATION

Fan Motor2 Fault	F032	1. Motor is in locked-rotor state 2. The wire connection between DC-fan motor module and fan motor is in bad contact	1. Change a new fan motor 2. Check the wire connection and make sure they are in good contact
Communication Fault (speed control module)	E081	Speed control module and main board communication fail	Check the communication connection

Frequency conversion board fault table:

Protection/fault	Fault display	Reason	Elimination methods
Drv1 MOP alarm	F01	MOP drive alarm	Recovery after the 150s
Inverter offline	F02	Frequency conversion board and main board communication failure	Check the communication connection
IPM protection	F03	IPM modular protection	Recovery after the 150s
Comp. Driver Failure	F04	Lack of phase, step or drive hardware damage	Check the measuring voltage check frequency conversion board hardware
DC Fan Fault	F05	Motor current feedback open circuit or short circuit	Check whether current return wires connected motor
IPM Overcurrent	F06	IPM Input current is large	Check and adjust the current measurement
Inv. DC Overvoltage	F07	DC bus voltage > Dc bus over-voltage protection value	Check the input voltage measurement
Inv. DC Lessvoltage	F08	DC bus voltage < Dc bus over-voltage protection value	Check the input voltage measurement
Inv. Input Lessvolt.	F09	The input voltage is low, causing the input current is high	Check the input voltage measurement
Inv. Input Overvolt.	F10	The input voltage is too high, more than outage protection current RMS	Check the input voltage measurement
Inv. Sampling Volt.	F11	The input voltage sampling fault	Check and adjust the current measurement
Comm. Err DSP-PFC	F12	DSP and PFC connect fault	Check the communication connection
Input Over Cur.	F26	The equipment load is too large	
PFC fault	F27	The PFC circuit protection	Check the PFC switch tube short circuit or not
IPM Over heating	F15	The IPM module is overheat	Check and adjust the current measurement
Weak Magnetic Warn	F16	Compressor magnetic force is not enough	
Inv. Input Out Phase	F17	The input voltage lost phase	Check and measure the voltage adjustment
IPM Sampling Cur.	F18	IPM sampling electricity is fault	Check and adjust the current measurement
Inv. Temp. Probe Fail	F19	Sensor is short circuit or open circuit	Inspect and replace the sensor
Inverter Overheating	F20	The transducer is overheat	Check and adjust the current measurement
Inv. Overheating Warn	F22	Transducer temperature is too high	Check and adjust the current measurement
Comp. OverCur. Warn	F23	Compressor electricity is large	The compressor over-current protection
Input Over Cur. Warn	F24	Input current is too large	Check and adjust the current measurement
EEPROM Error Warn	F25	MCU error	Check whether the chip is damaged Replace the chip
V15V over/undervoltage fault	F28	The V15V is overload or undervoltage	Check the V15V input voltage in range 13.5v~16.5v or not

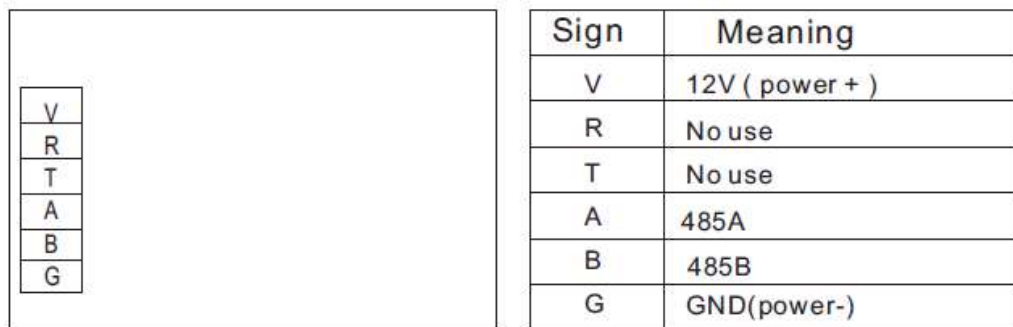
## 4. USAGE AND OPERATION

### 4.7.B - Parameter list

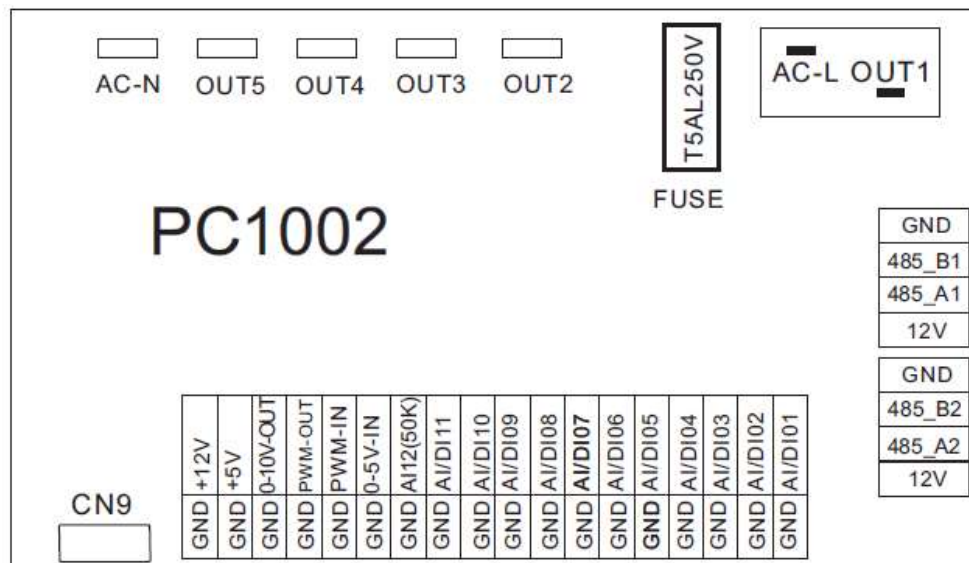
Meaning	Default	Remarks
Refrigeration target temperature set point	28°C	Adjustable
Heating the target temperature set point	28°C	Adjustable
Automatic target temperature set point	27°C	Adjustable

## 4.8 Interface drawing

### 4.8.A Wire control interface diagram and definition



### 4.8.B Controller interface diagram and definition



## 4. USAGE AND OPERATION

Main board of the input and output interface instructions below

Number	Sign	Meaning
01	OUT1	Compressor ( output 220-230VAC )
02	OUT2	Water pump ( output 220-230VAC )
03	OUT3	4-way valve ( output 220-230VAC )
04	OUT4	High speed of fan ( output 220-230VAC )
05	OUT5	Low speed of fan (output 220-230VAC )
06	AC-L	Live wire ( input 220-230VAC )
07	AC-N	Neutral wire ( input 220-230VAC )
08	AI/DI01	Emergency switch ( input )
09	AI/DI02	Water flow switch ( input )
10	AI/DI03	System low pressure ( input )
11	AI/DI04	System high pressure ( input )
12	AI/DI05	System suction temperature ( input )
13	AI/DI06	Water input temperature ( input )
14	AI/DI07	Water output temperature ( input )
15	AI/DI08	System fan coil temperature ( input )
16	AI/DI09	Ambient temperature ( input )
17	AI/DI10	Mode switch ( input )
18	AI/DI11	Master-slave machine switch / Antifreeze temperature ( input )
19	AI12(50K)	System Exhaust temperature ( input )
20	0_5V_IN	Compressor current detection/Pressure sensor(input)
21	PWM_IN	Master-slave machine switch / Feedback signal of EC fan ( input )
22	PWM_OUT	AC fan control ( output )
23	0_10V_OUT	EC fan control ( output )
24	+5V	+5V ( output )
25	+12V	+12V ( output )
26	GND	Frequency conversion board communications
27	485_B1	
28	485_A1	
29	12V	
30	GND	Color line controller communication
31	485_B2	
32	485_A2	
33	12V	
34	CN9	Electronic expansion valve

## 5. MAINTENANCE AND INSPECTION

### 5.1 Maintenance

Check the water supply device and the release often. You should avoid the condition of no water or air entering into system, as this will influence unit's performance and reliability.

You should clear the pool/spa filter regularly to avoid damage to the unit as a result of the dirty or clogged filter.

The area around the unit should be dry, clean and well ventilated. Clean the side heating exchanger regularly to maintain good heat exchange as conserve energy.

The operation pressure of the refrigerant system should only be serviced by a certified Technician

Check the power supply and cable connection often. Should the unit begin to operate abnormally, switch it off and contact the qualified technician.

Discharge all water in the water pump and water system, so that freezing of the water in the pump or water system does not occur. You should discharge the water at the bottom of water pump if the unit will not be used for an extended period. You should check the unit thoroughly and fill the system with water fully before using it for the first time.



# 6.APPENDIX

## 6.1 Caution & Warning

1. The unit can only be repaired by qualified installer centre personnel or an authorised dealer. ( Europe market )
2. This appliance can used by children aged from 8 years and above and persons with reduced physical, sensory or mental capabilities or lack of experience and knowledge if they have been given supervision or instruction concerning use of the appliance in a safe way and understand the hazards involved.
3. Please make sure that the unit and power connection have good earthing, otherwise may cause electrical shock.
4. If the supply cord is damaged, it must be replaced by the manufacturer or our service agent or similarly qualified person in order to avoid a hazard.
5. Directive 2002/96/EC (WEEE):  
The symbol depicting a crossed-out waste bin that is underneath the appliance indicates that this product, at the end of its useful life, must be handled separately from domestic waste, must be taken to a recycling centre for electric and electronic devices or handed back to the dealer when purchasing an equivalent appliance.
6. Directive 2002/95/EC (RoHS): This product is compliant with directive 2002/95/EC (RoHS) concerning restrictions for the use of harmful substances in electric and electronic devices.
7. The unit CANNOT be installed near the flammable gas. Once there is any leakage of the gas, fire can be occur
8. Make sure that there is circuit breaker for the unit, lack of circuit breaker can lead to electrical shock or fire.
9. The heat pump located inside the unit is equipped with an over-load protection system. It does not allow for the unit to start for at least 3 minutes from a previous stoppage.
10. The unit can only be repaired by the qualified personnel of an installer centre or an authorized dealer. (for North America market)
11. Installation must be performed in accordance with the NEC/CEC by authorized person only. (for North America market)
12. USE SUPPLY WIRES SUITABLE FOR 75°C.
13. Caution: Single wall heat exchanger, not suitable for potable water connection.
14. Children shall not play with the appliance. Cleaning and user maintenance shall not be made by children without supervision.

## 6.APPENDIX

### 6.2 Cable specification

#### 1. Single phase unit

Nameplate maximum current	Phase line	Earth line	MCB	Creepage protector	Signal line
No more than 10A	$2 \times 1.5\text{mm}^2$	$1.5\text{mm}^2$	20A	30mA less than 0.1 sec	$n \times 0.5\text{mm}^2$
10~16A	$2 \times 2.5\text{mm}^2$	$2.5\text{mm}^2$	32A	30mA less than 0.1 sec	
16~25A	$2 \times 4\text{mm}^2$	$4\text{mm}^2$	40A	30mA less than 0.1 sec	
25~32A	$2 \times 6\text{mm}^2$	$6\text{mm}^2$	40A	30mA less than 0.1 sec	
32~40A	$2 \times 10\text{mm}^2$	$10\text{mm}^2$	63A	30mA less than 0.1 sec	
40~63A	$2 \times 16\text{mm}^2$	$16\text{mm}^2$	80A	30mA less than 0.1 sec	
63~75A	$2 \times 25\text{mm}^2$	$25\text{mm}^2$	100A	30mA less than 0.1 sec	
75~101A	$2 \times 25\text{mm}^2$	$25\text{mm}^2$	125A	30mA less than 0.1 sec	
101~123A	$2 \times 35\text{mm}^2$	$35\text{mm}^2$	160A	30mA less than 0.1 sec	
123~148A	$2 \times 50\text{mm}^2$	$50\text{mm}^2$	225A	30mA less than 0.1 sec	
148~186A	$2 \times 70\text{mm}^2$	$70\text{mm}^2$	250A	30mA less than 0.1 sec	
186~224A	$2 \times 95\text{mm}^2$	$95\text{mm}^2$	280A	30mA less than 0.1 sec	

#### 2. Three phase unit

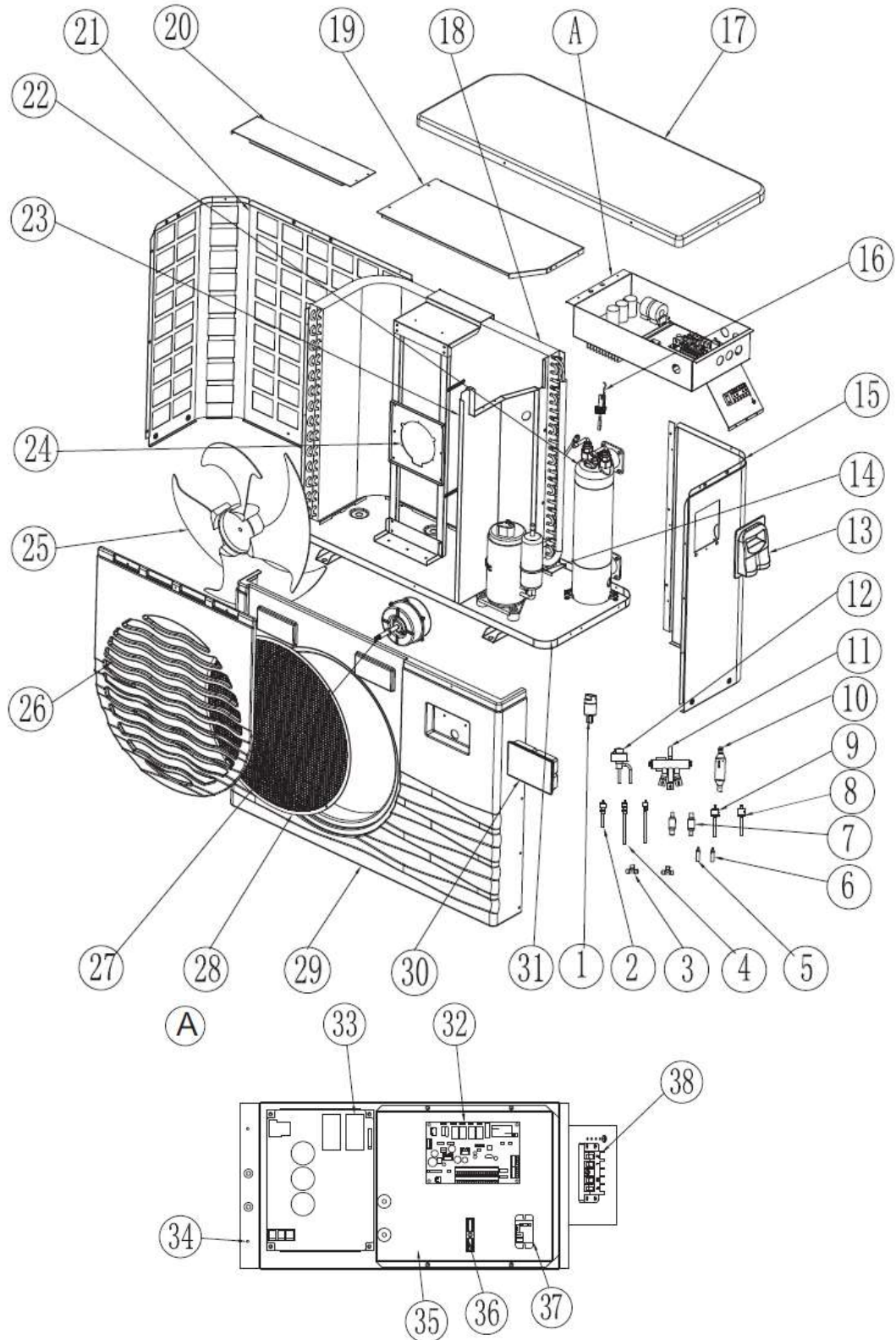
Nameplate maximum current	Phase line	Earth line	MCB	Creepage protector	Signal line
No more than 10A	$3 \times 1.5\text{mm}^2$	$1.5\text{mm}^2$	20A	30mA less than 0.1 sec	$n \times 0.5\text{mm}^2$
10~16A	$3 \times 2.5\text{mm}^2$	$2.5\text{mm}^2$	32A	30mA less than 0.1 sec	
16~25A	$3 \times 4\text{mm}^2$	$4\text{mm}^2$	40A	30mA less than 0.1 sec	
25~32A	$3 \times 6\text{mm}^2$	$6\text{mm}^2$	40A	30mA less than 0.1 sec	
32~40A	$3 \times 10\text{mm}^2$	$10\text{mm}^2$	63A	30mA less than 0.1 sec	
40~63A	$3 \times 16\text{mm}^2$	$16\text{mm}^2$	80A	30mA less than 0.1 sec	
63~75A	$3 \times 25\text{mm}^2$	$25\text{mm}^2$	100A	30mA less than 0.1 sec	
75~101A	$3 \times 25\text{mm}^2$	$25\text{mm}^2$	125A	30mA less than 0.1 sec	
101~123A	$3 \times 35\text{mm}^2$	$35\text{mm}^2$	160A	30mA less than 0.1 sec	
123~148A	$3 \times 50\text{mm}^2$	$50\text{mm}^2$	225A	30mA less than 0.1 sec	
148~186A	$3 \times 70\text{mm}^2$	$70\text{mm}^2$	250A	30mA less than 0.1 sec	
186~224A	$3 \times 95\text{mm}^2$	$95\text{mm}^2$	280A	30mA less than 0.1 sec	

When the unit will be installed at outdoor, please use the cable which can against UV.

## 6.APPENDIX

### 6.3 Explosive view of the unit

Oasis Ci 10



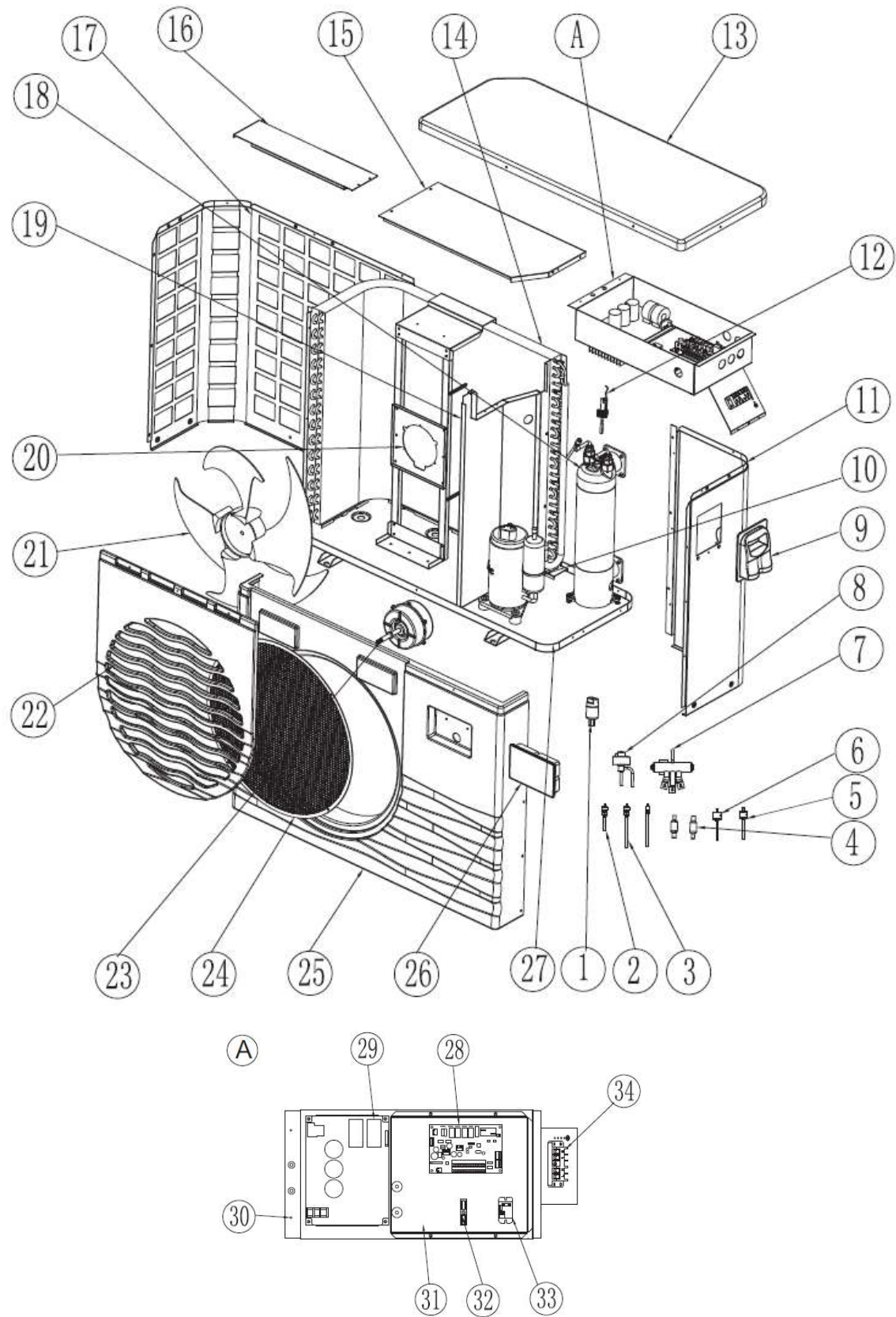
## 6.APPENDIX

<b>No</b>	<b>Code</b>	<b>Parts Name</b>	<b>Qty</b>
1	20000-360123	Pressure Sensor	1
2	20000-140153	Needle	2
3	2000-1435	T-Pipe	1
4	20000-140512	Needle	1
5	2002-1496	Reducing Straight-Way	1
6	20000-140058	Reducing Straight-Way	1
7	2004-1444	Filter	2
8	2001-3605	Pressure Switch	1
9	20000-360157	Pressure Switch	1
10	2001-1499	Check Valve	1
11	2004-1437	4-Way Valve And Fittings	1
12	20000-140449	Electronic Expansion Valve	1
13	32009-220029	Electronic Box	1
14	20000-110227	Compressor	1
15	32012-210498	Right Panel	1
16	20000-360005	Flow Switch	1
17	32012-210489	Top Cover	1
18	32012-120109	Heat Exchanger	1
19	32012-210494	Electrical Box Cover	1
20	32012-210493	Supporting Plate	1
21	32012-210495	Back Protection Net	1
22	32012-120114	Titanium Heat Exchanger	1
23	32012-210491	Middle Plate	1
24	32012-210518	Fan Motor Support	1
25	20000-270004	Fan Blade	1
26	32012-210488	Fan Guard	1
27	20000-330132	Fan Motor	1
28	32018-210132	Fan Protection Net	1
29	32012-210487	Front Plate	1
30	95005-310500	Colorful Display	1
31	32012-210691	Chassis	1
32	95005-310569	Pc1002	1
33	20000-310170	Inverter Drive Module	1
34	32012-210496	Electrical Box	1
35	32012-210497	Scale Board	1
36	2000-3909	Terminal Board(2 Bit)	1
37	20000-360203	Relay	1
38	4000-3901	Terminal Board(5 Bit)	1



# 6.APPENDIX

Oasis Ci 13

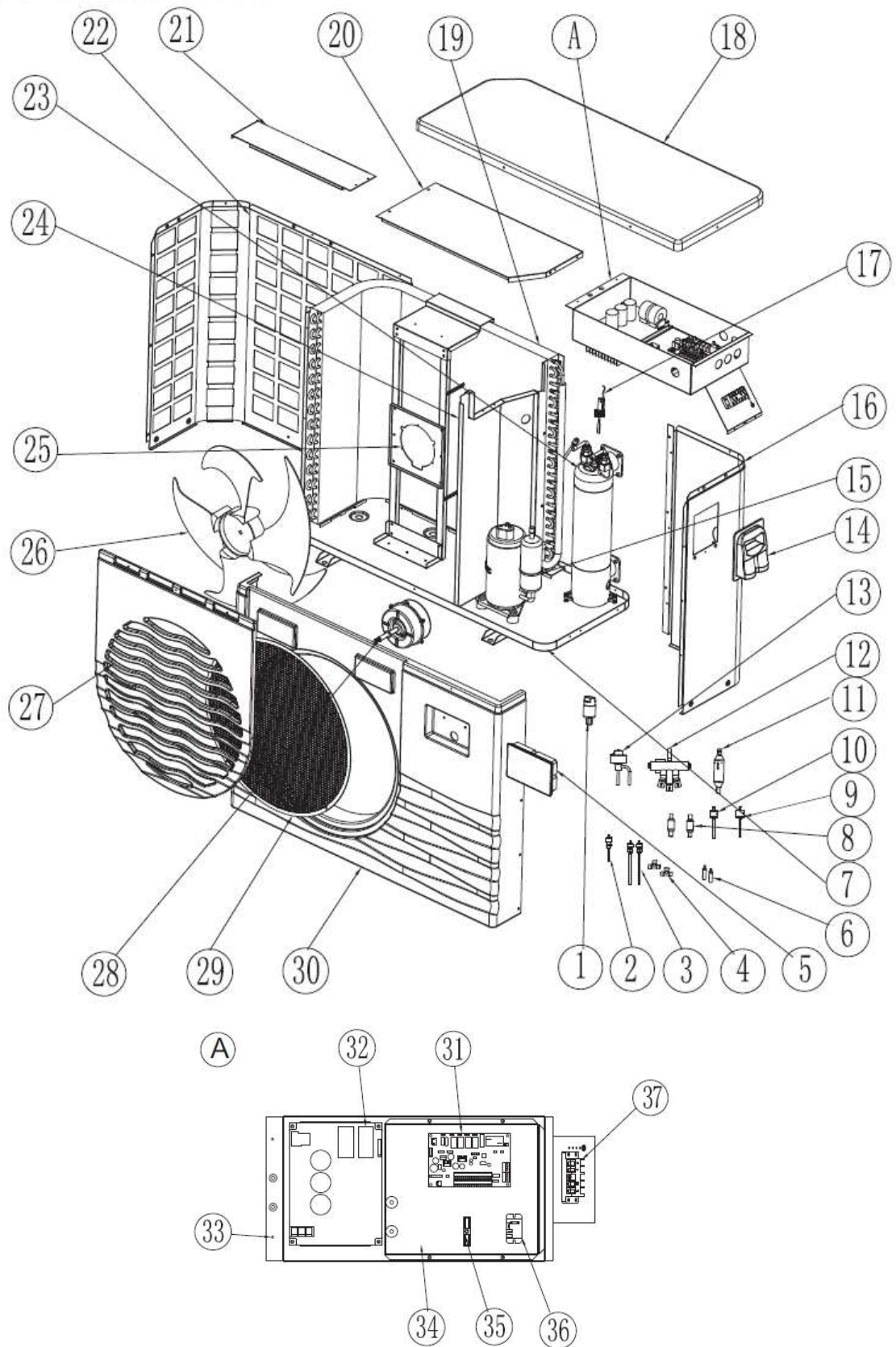


## 6.APPENDIX

No	Code	Parts Name	Qty
1	20000-360123	pressure sensor	1
2	20000-140150	Needle	2
3	20000-140512	Needle	1
4	2004-1444	Filter	2
5	20000-360157	pressure switch	1
6	2001-3605	pressure switch	1
7	2004-1437	4-way Valve and fittings	1
8	20000-140346	Electronic Expansion Valve	1
9	32009-220029	electronic box	1
10	20000-110217	compressor	1
11	32009-210399	right panel	1
12	20000-360005	flow switch	1
13	32018-210127	top cover	1
14	32009-120046	heat exchanger	1
15	32018-210115	Electrical Box Cover	1
16	32018-210114	Supporting Plate	1
17	32009-210398	back protection net	1
18	32009-120045	titanium heat exchanger	1
19	32009-210390	Middle Plate	1
20	32018-210113	Fan Motor Support	1
21	20000-270004	Fan Blade	1
22	32009-210386	Fan Guard	1
23	20000-330132	fan motor	1
24	32018-210132	fan protection net	1
25	32009-210387	Front Plate	1
26	95005-310500	Colorful display	1
27	32009-210532	Chassis	1
28	95005-310569	Pc1002	1
29	20000-310170	Inverter drive module	1
30	32009-210392	Electrical Box	1
31	32009-210393	scale board	1
32	2000-3909	Terminal Board(2 bit)	1
33	20000-360203	Relay	1
34	4000-3901	Terminal Board(5 bit)	1

## 6.APPENDIX

Oasis Ci 17



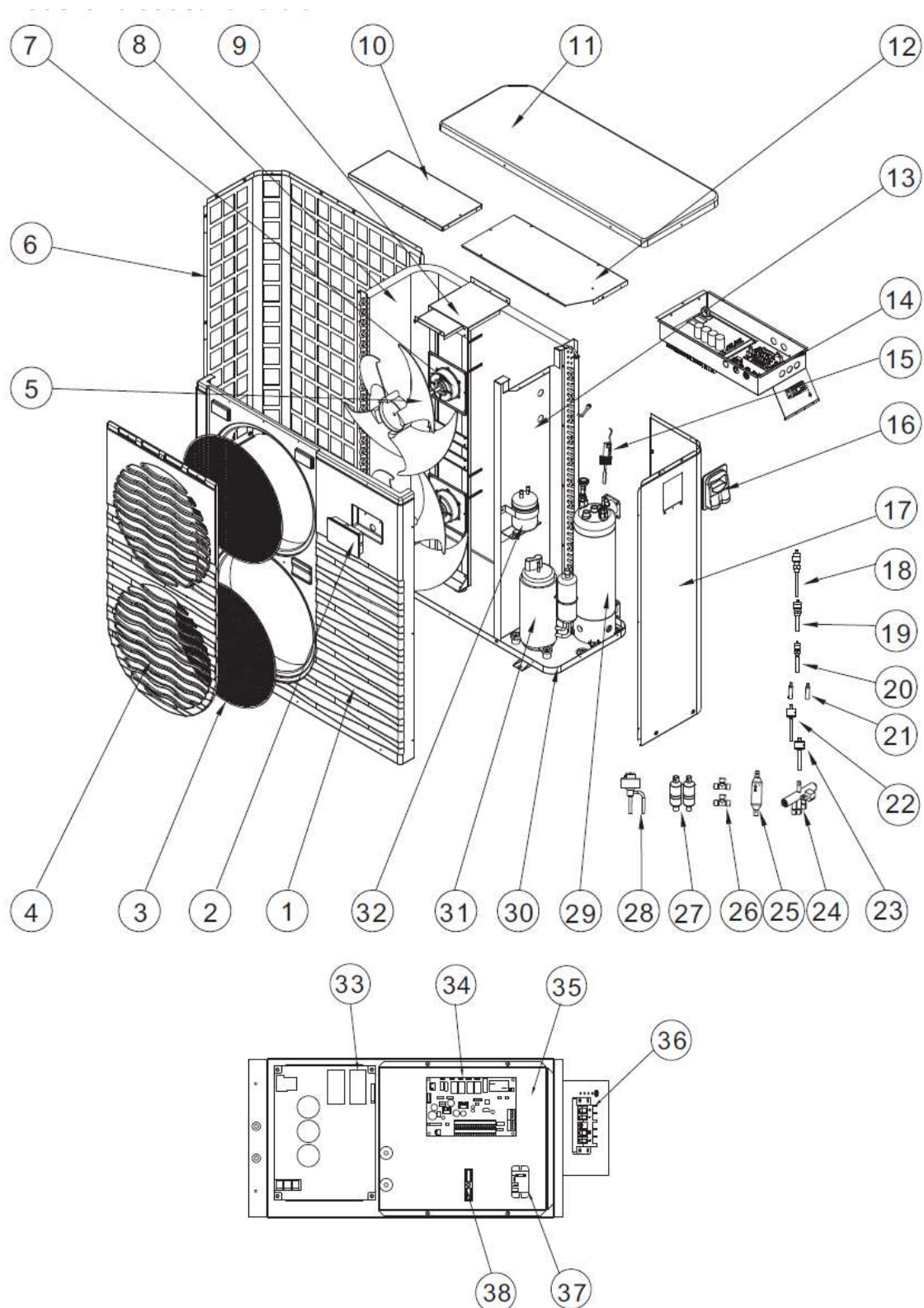
## 6.APPENDIX

No	Code	Parts Name	Qty
1	20000-360123	pressure sensor	1
2	20000-140512	Needle	1
3	20000-140150	Needle	2
4	2000-1435	T-Pipe	2
5	95005-310500	Colorful display	1
6	20000-140143	reducing straight-way	2
7	32018-210125	Chassis	1
8	2004-1444	Filter	2
9	20000-360157	pressure switch	1
10	2001-3605	pressure switch	1
11	2001-1499	check valve	1
12	2001-1491	4-way Valve and fittings	1
13	20000-140450	Electronic Expansion Valve	1
14	32009-220029	electronic box	1
15	20000-110289	compressor	1
16	32018-210106	right panel	1
17	20000-360005	flow switch	1
18	32018-210127	top cover	1
19	32018-120021	heat exchanger	1
20	32018-210115	Electrical Box Cover	1
21	32018-210114	Supporting Plate	1
22	32018-210107	back protection net	1
23	32019-120013	titanium heat exchanger	1
24	32018-210110	Middle Plate	1
25	32018-210113	Fan Motor Support	1
26	20000-270004	Fan Blade	1
27	32009-210386	Fan Guard	1
28	20000-330132	fan motor	1
29	32018-210132	fan protection net	1
30	32009-210387	Front Plate	1
31	95005-310569	PC1002	1
32	20000-310165	Inverter drive module	1
33	32018-210108	Electrical Box	1
34	32018-210109	scale board	1
35	2000-3909	Terminal Board(2 bit)	1
36	20000-360203	Relay	1
37	4000-3901	Terminal Board(5 bit)	1
38			



# 6.APPENDIX

Oasis Ci 21

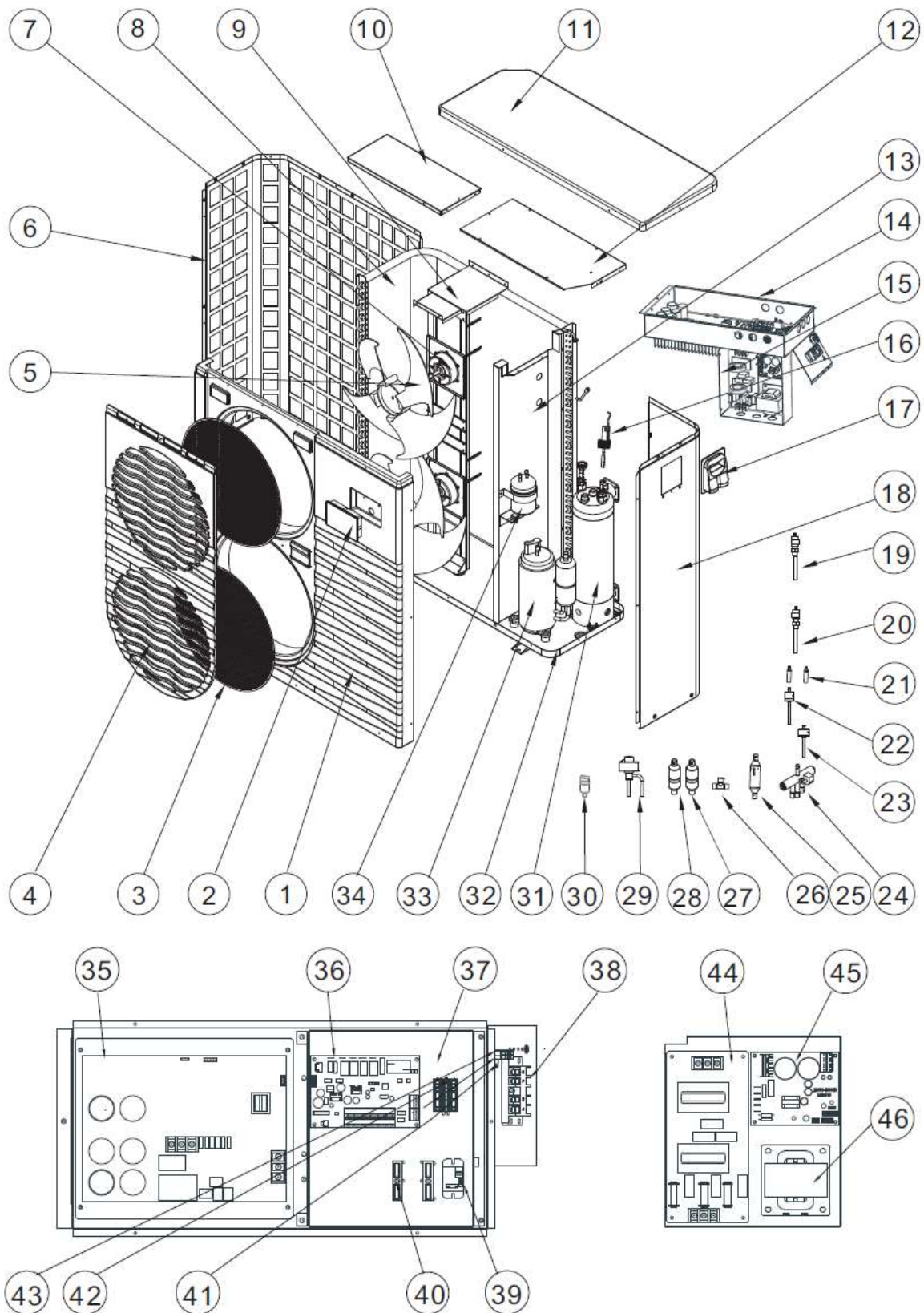


## 6.APPENDIX

<b>No</b>	<b>Code</b>	<b>Parts Name</b>	<b>Qty</b>
1	32019-210066	Front Plate	1
2	95005-310500	Colorful display	1
3	32018-210132	fan protection net	1
4	32019-210065	Fan Guard	1
5	20000-270004	Fan Blade	1
6	32019-210068	back protection net	1
7	20000-330132	fan motor	1
8	32019-120008	heat exchanger	1
9	32019-210063	Fan Motor Support	1
10	32019-210070	Supporting Plate	1
11	32018-210127	top cover	1
12	32019-210071	Electrical Box Cover	1
13	32019-210069	Middle Plate	1
14	32019-210072	Electrical Box	1
15	20000-360005	flow switch	1
16	32009-220029	Junction box	1
17	32019-210067	right panel	1
18	20000-140150	Needle	1
19	20000-140150	Needle	1
20	20000-140512	Needle	1
21	20000-140143	Variable diameter	2
22	2001-3605	pressure switch	1
23	20000-360157	pressure switch	1
24	2001-1491	4-way Valve and fittings	1
25	2001-1499	Check valve	1
26	2000-1435	T-Pipe	2
27	2004-1444	Filter	2
28	20000-140401	Electronic Expansion Valve	1
29	32019-120014	titanium heat exchanger	1
30	32019-210064	Chassis	1
31	20000-110296	compressor	1
32	3600-1401	fluid reservoir	1
33	20000-310165	Inverter drive module	1
34	95005-310569	PC1002	1
35	32019-210073	Electric box lining board	1
36	4000-3901	Terminal Board(5 bit)	1
37	20000-360203	Relay	1
38	2000-3909	Terminal Board(2 bit)	1

## 6.APPENDIX

Oasis Ci 25 T



## 6.APPENDIX

<b>No</b>	<b>Code</b>	<b>Parts Name</b>	<b>Qty</b>
1	32019-210066	Front Plate	1
2	95005-310500	Colorful display	1
3	32018-210132	Fan protection net	2
4	32019-210065	Fan uard	1
5	20000-270004	Fan lade	2
6	32015-210028	Back protection net	1
7	20000-330132	Fan motor	2
8	32015-120012	Heat exchanger	1
9	32019-210063	Fan Motor Support	1
10	32019-210070	Supporting Plate	1
11	32018-210127	Top cover	1
12	32019-210071	Electrical Box Cover	1
13	32015-210018	Middle late	1
14	32019-210105	Electrical Box	1
15	32019-210098	Electrical box 2	1
16	20000-360005	Water Flow Switch	1
17	32009-220029	Junction box	1
18	32015-210020	Right Panel	1
19	20000-140512	Needle	1
20	20000-140150	Needle	2
21	20000-140143	Reducing	2
22	2001-3605	High pressure switch	1
23	20000-360157	Low pressure switch	1
24	2001-1491	4- Way Valve	1
25	2001-1499	Check valve	1
26	2000-1435	T - Junction	1
27	2004-1444	Filter	1
28	20000-140027	Filter	1
29	20000-140401	Electronic expansion valve	1
30	20000-360123	Pressure sensor	1
31	32015-120015	Tianium heat exchanger	1
32	32019-210064	Chassis	1
33	20000-110341	Compressor	1
34	20000-140579	Fluid reservoir	1
35	20000-310179	Inverter drive module	1
36	95005-310569	PC1002	1
37	32019-210073	Electric box lining board	1
38	20000-390180	Terminal Board(5 bit)	1
39	20000-360203	Relay	1
40	2000-3909	Terminal Board(2 bit)	2
41	20000-390049	Terminal	1
42	20000-390046	Terminal	4
43	20000-390047	Terminal plate	1
44	20000-310180	Three phase filter	1
45		ZL10 V3	1
46		Three - phase ac monitor	1

[illegible]



Correct Disposal of this product  
This marking indicates that product should not be disposed with other household wastes throughout the EU. To prevent possible harm to the environment to human health from uncontrolled waste disposal, recycle it responsibly to promote the sustainable reuse of material resources. To return your used device , please use the return and collection systems or contact the retailer where the product was purchased. They can take this product for environmental safe recycling.

Code: 20170818-0002